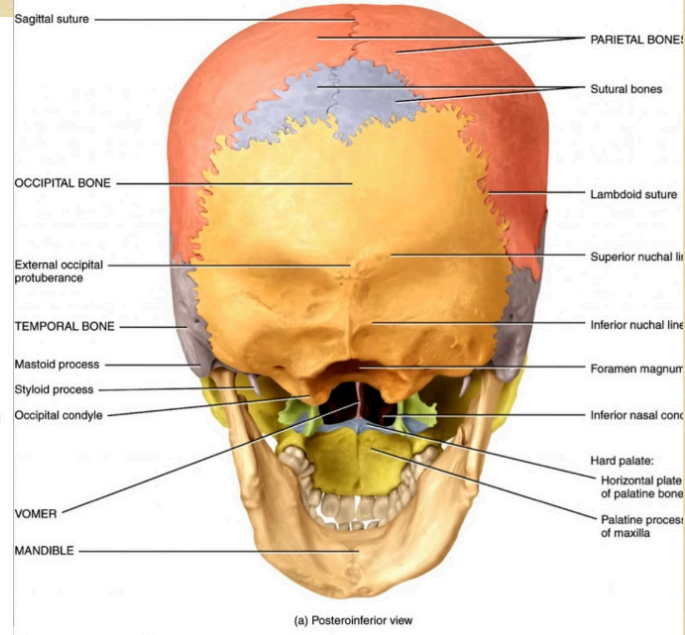
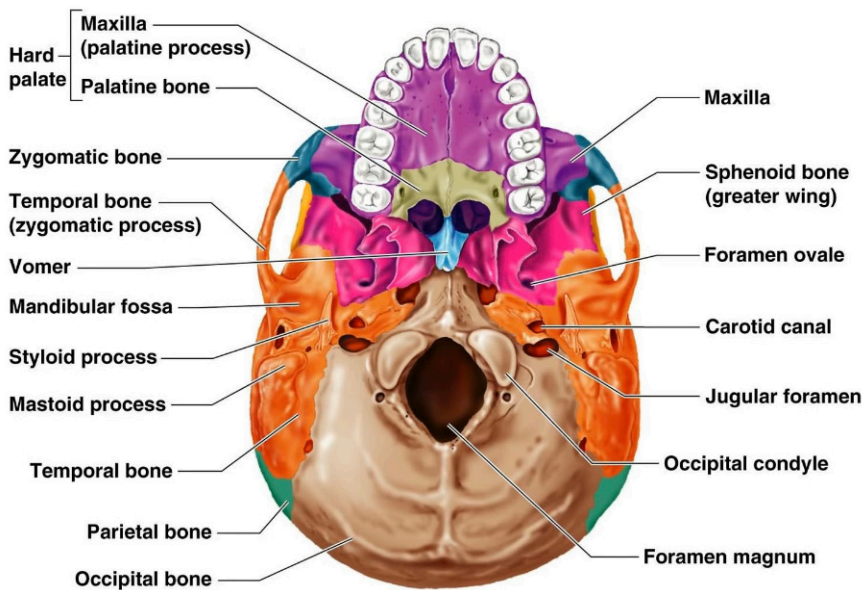
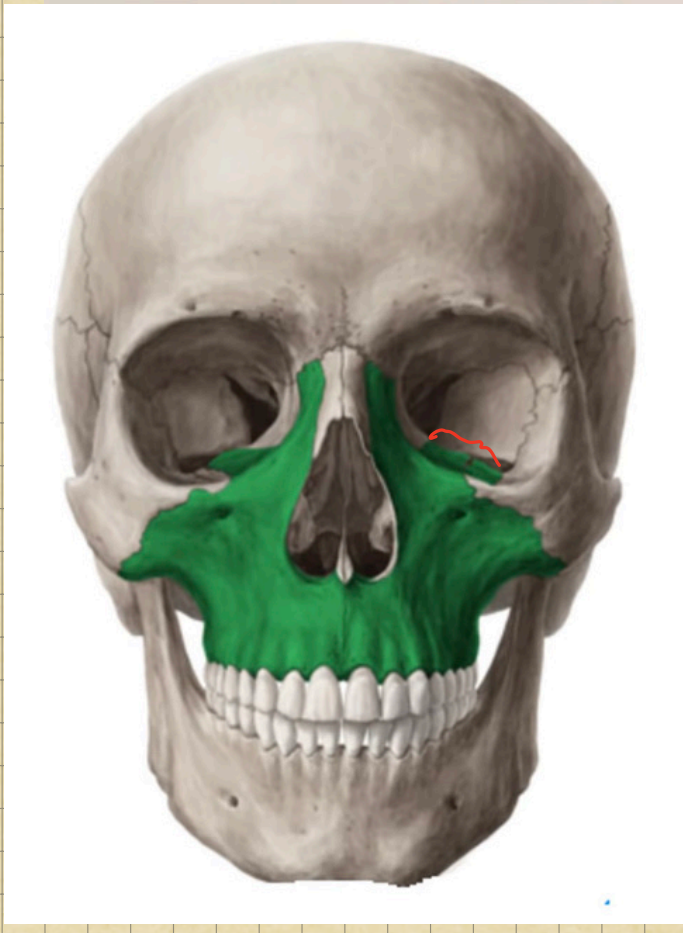


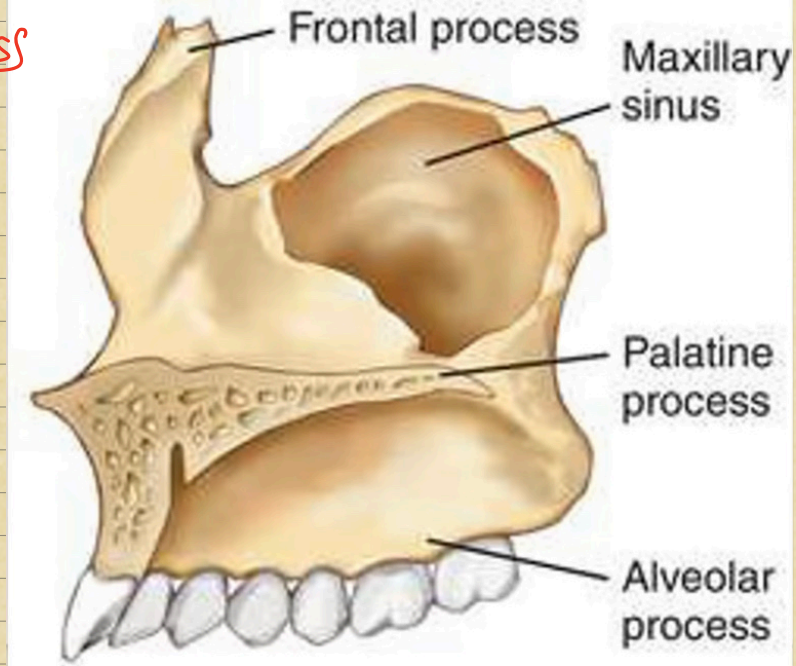
Maxilla:

♀ Viscerocranium çift kemiklerinden.

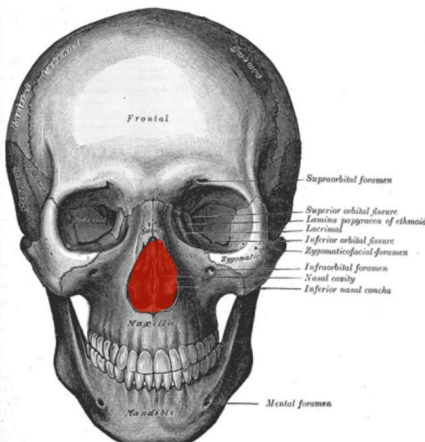
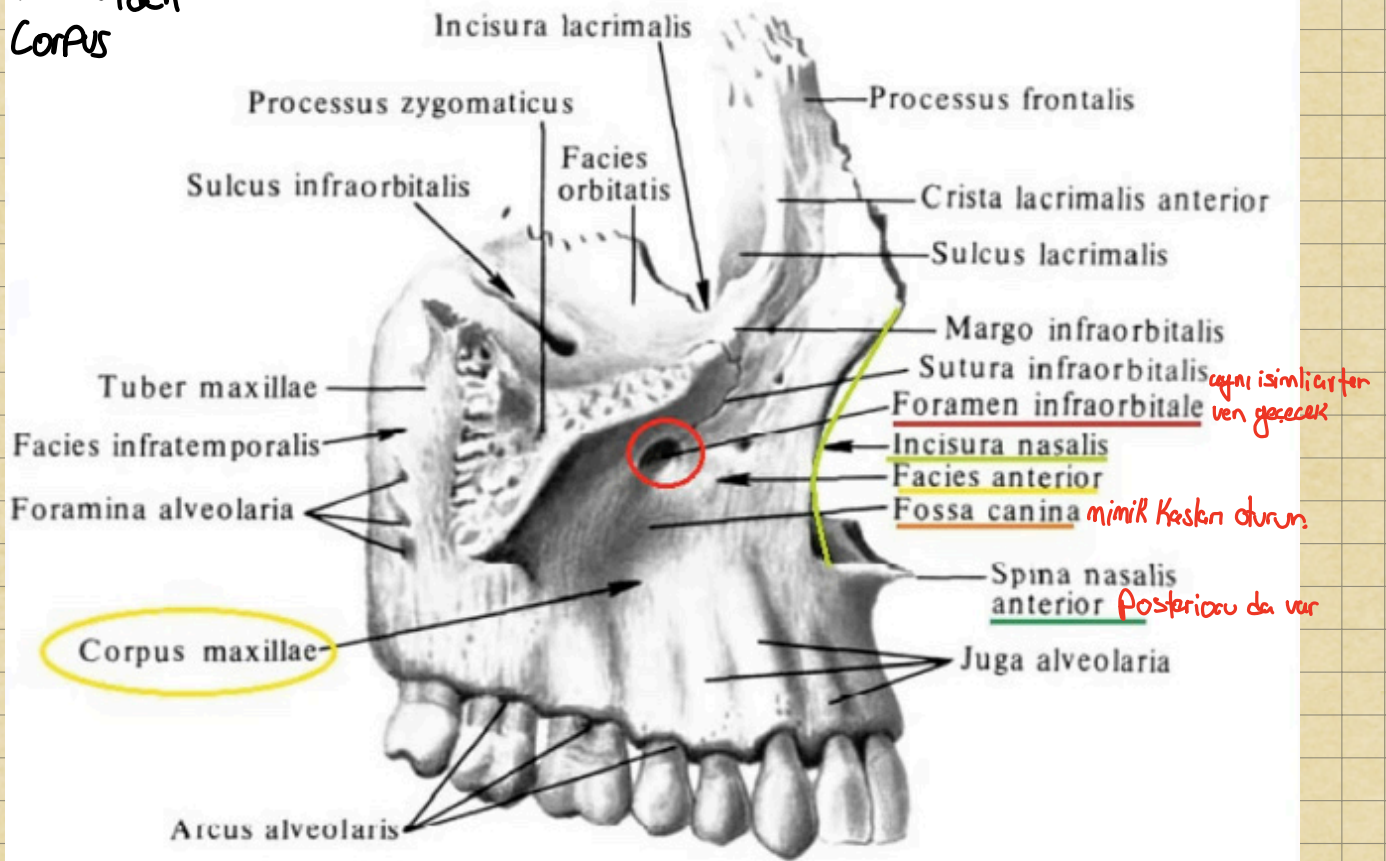
♀ 1 corpus
 4 yüz
 4 processus



Cep process



Lateral den
Corpus

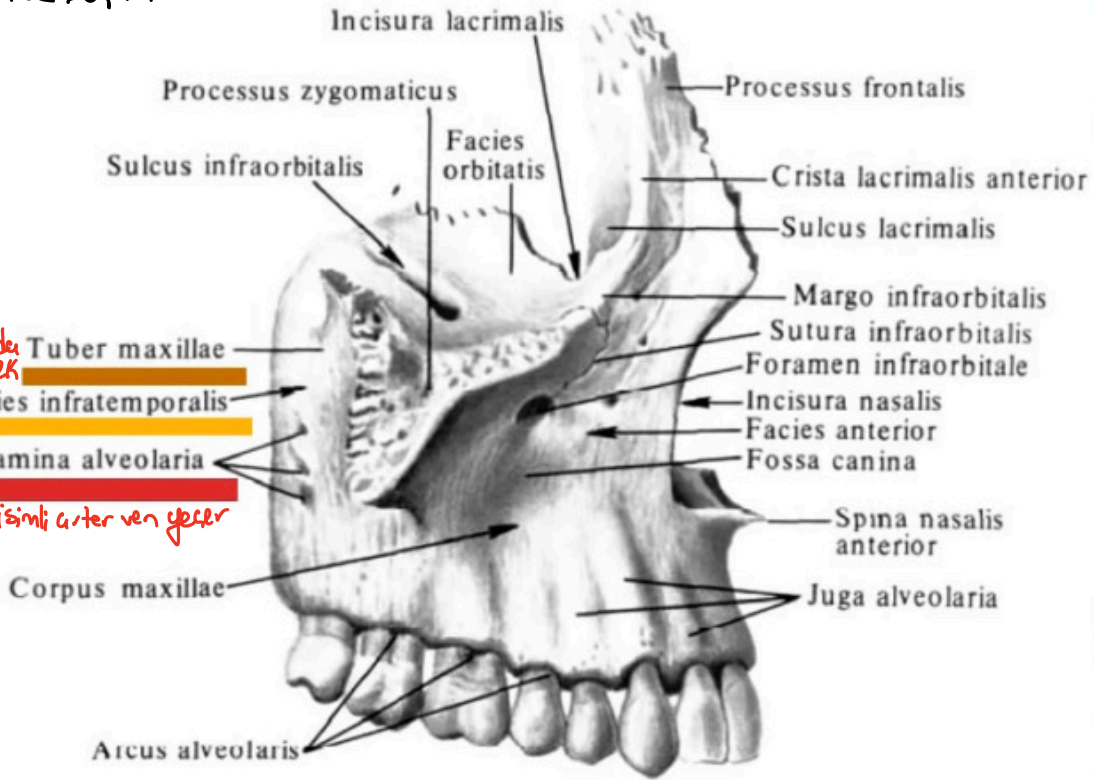


Apertura Piriformis
burun iskeletine gelir

Arka ve Lateral

Temporal'in altında
demek

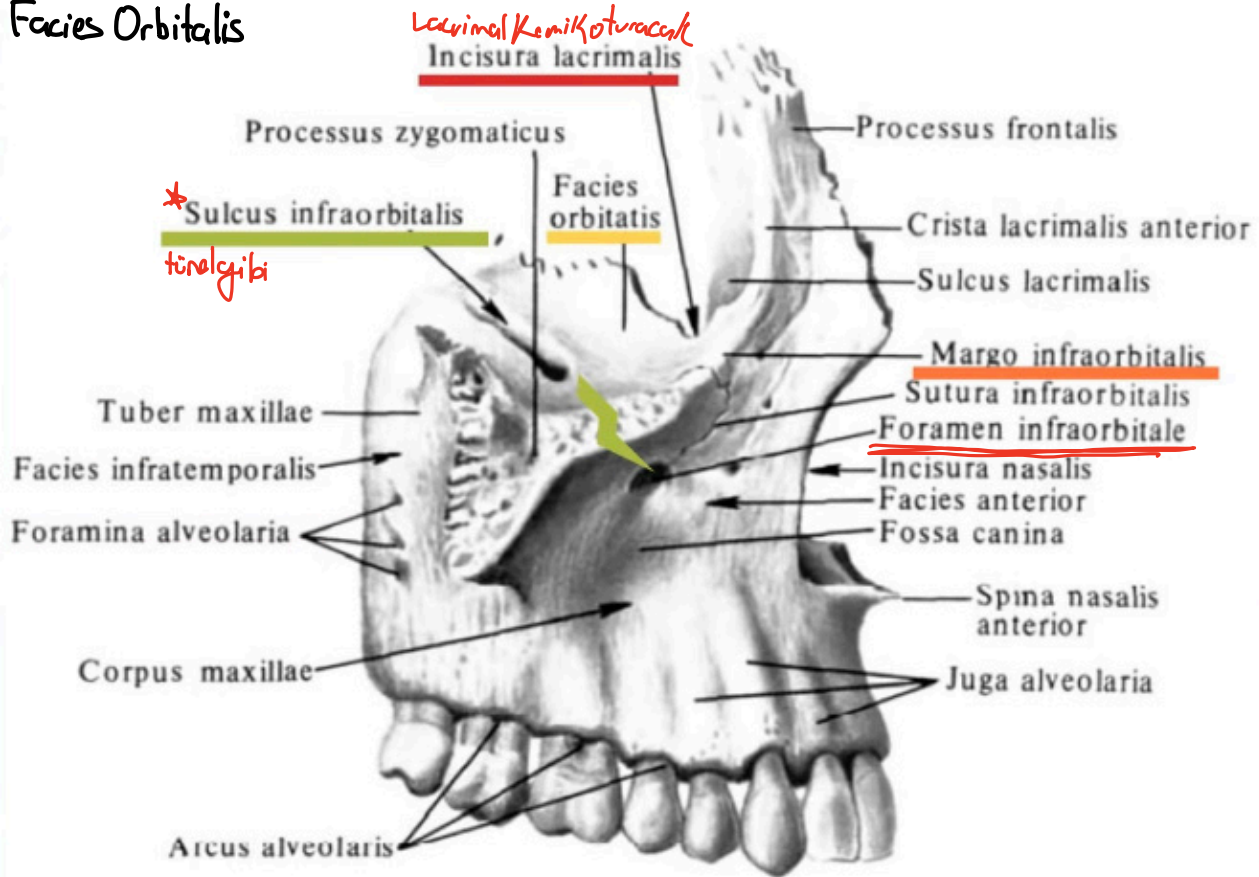
Foramina alveolaria
cyni isimli arter ven yollar



Facies Orbitalis

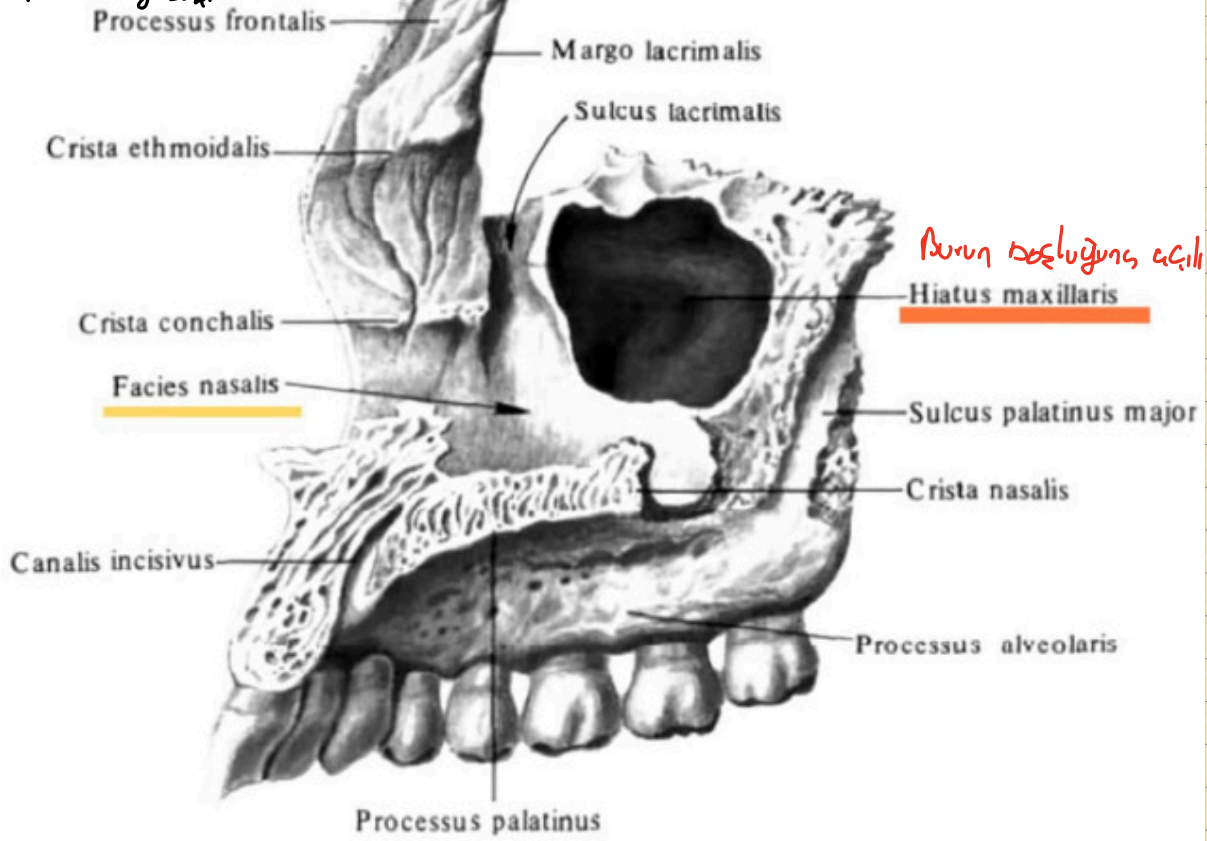
Lacrimal Kemik Kötürülecek
Incisura lacrimalis

*Sulcus infraorbitalis
tınal gibi

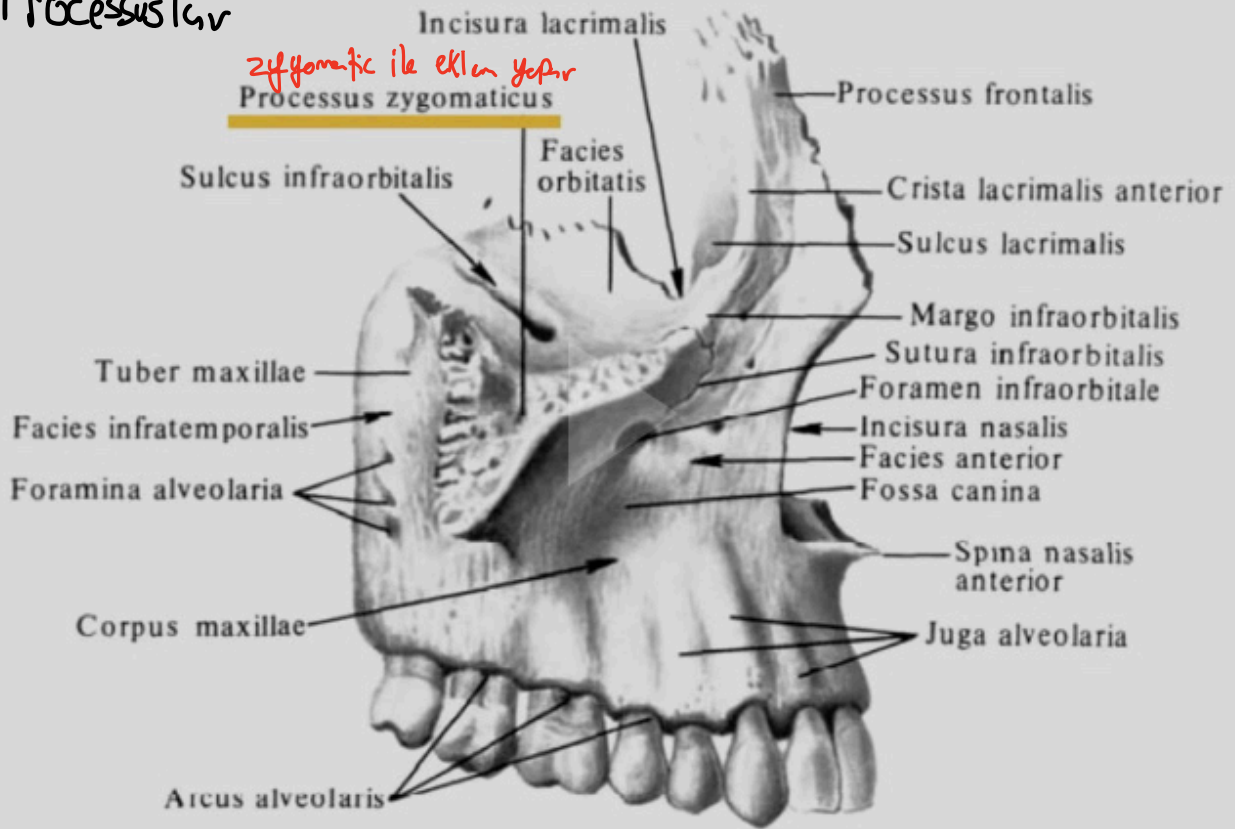


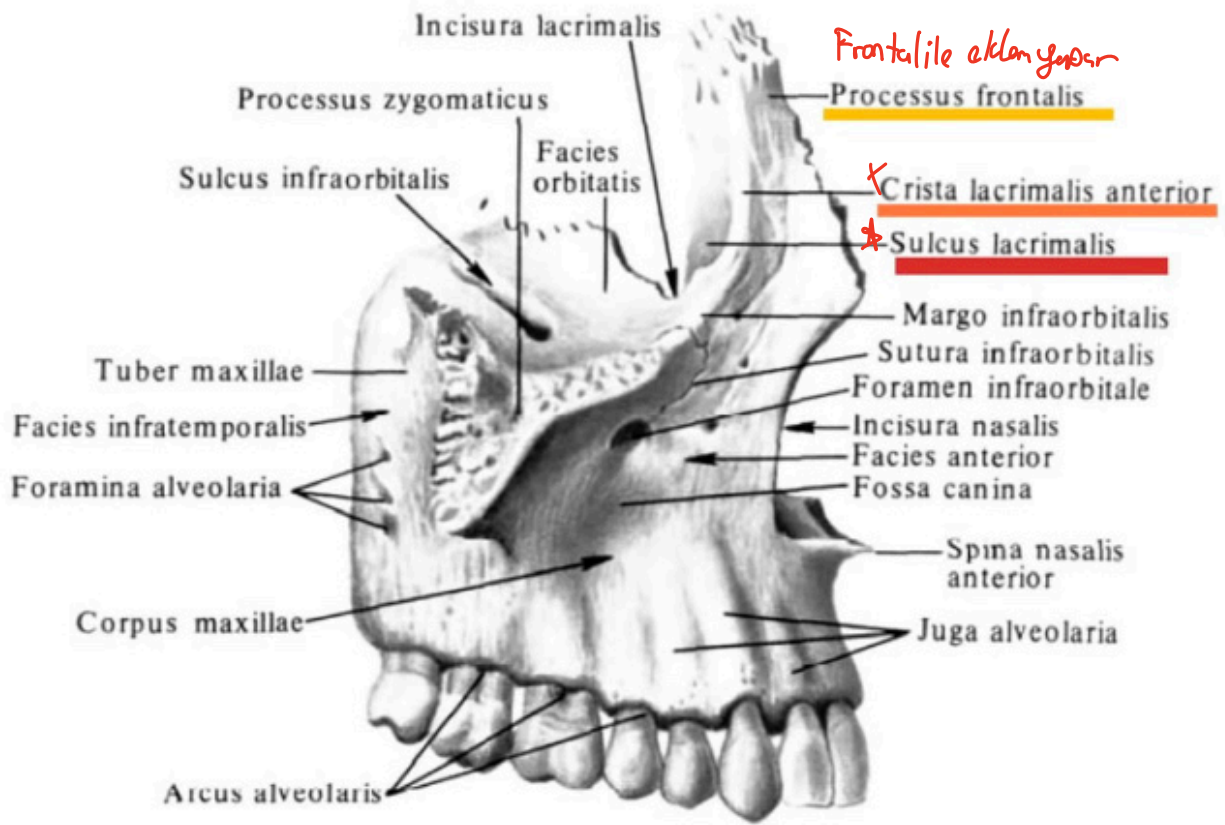
Facies Nasalis

Corpusun son yüzüğü.

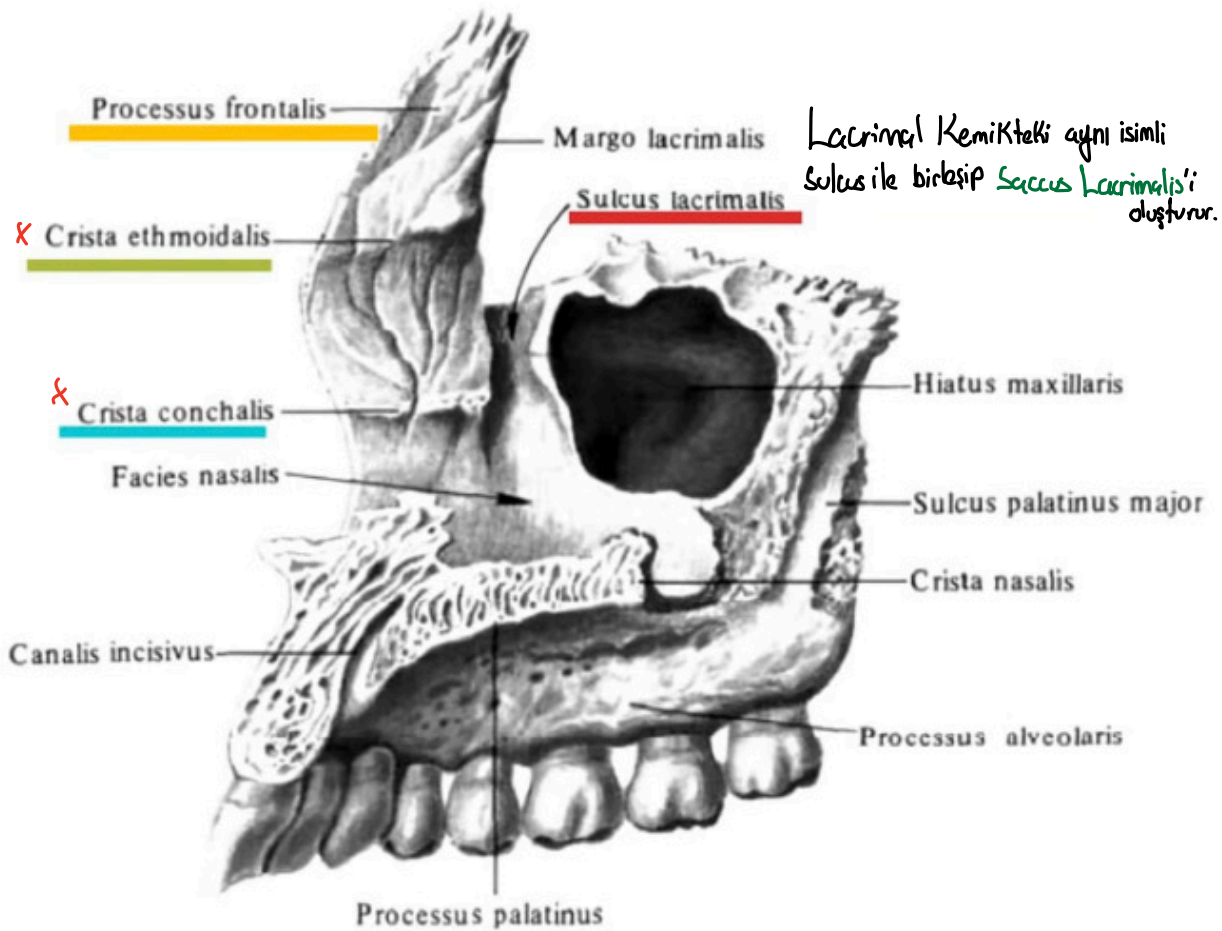


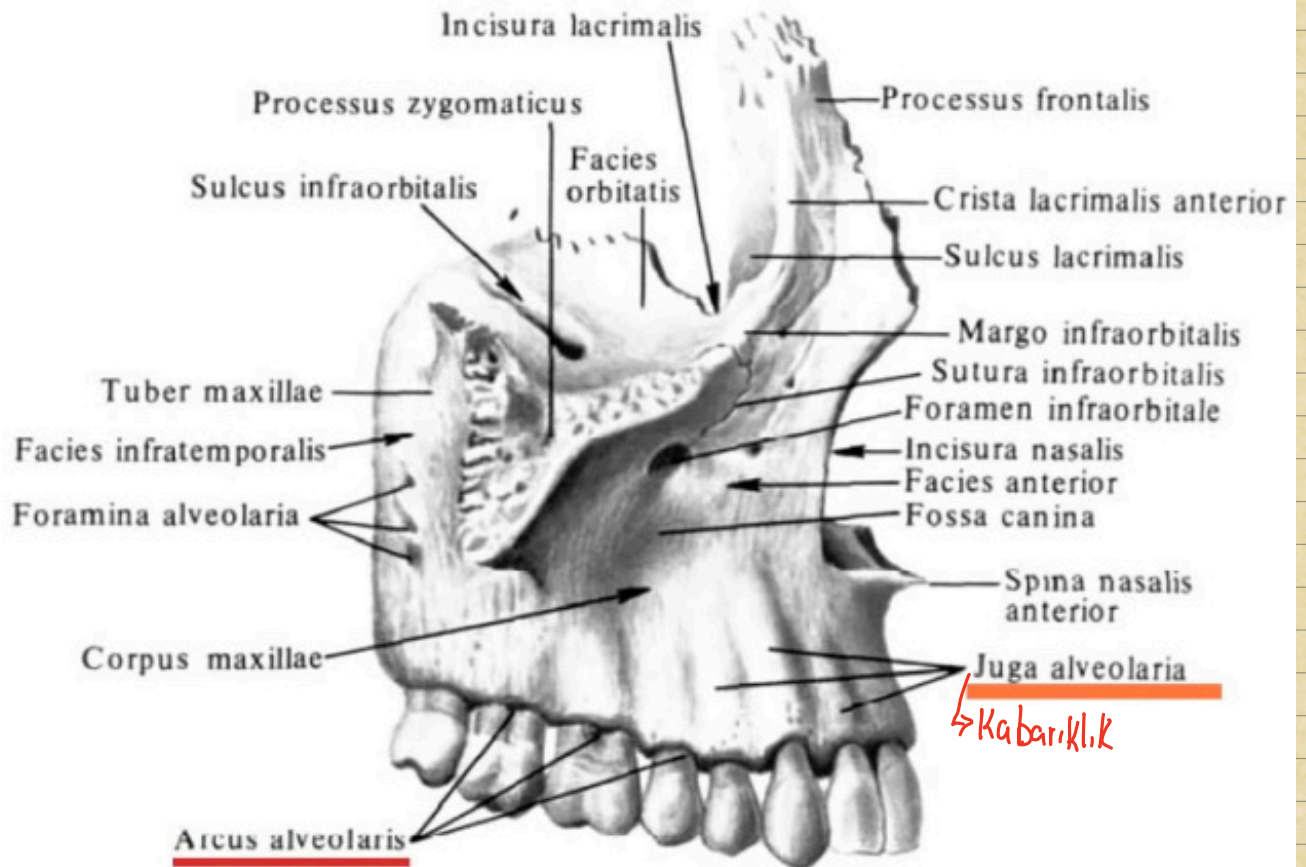
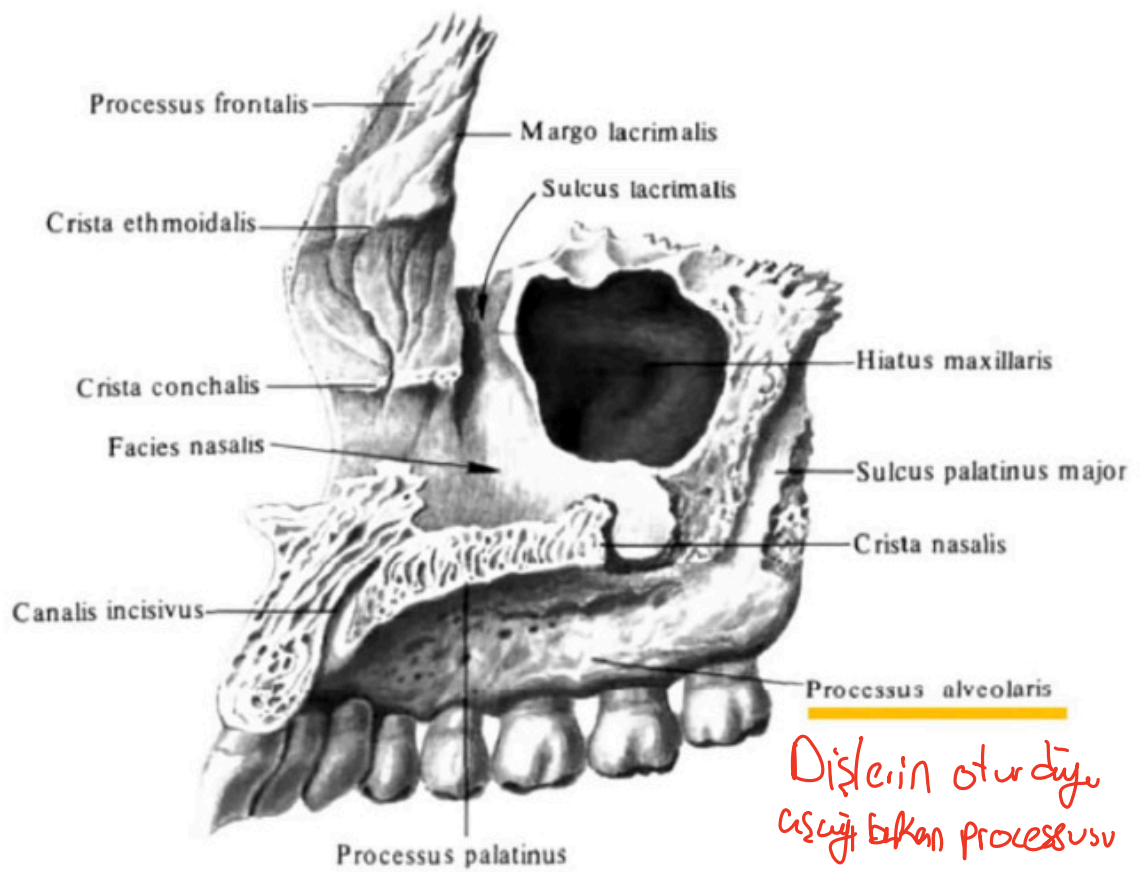
Processuslar



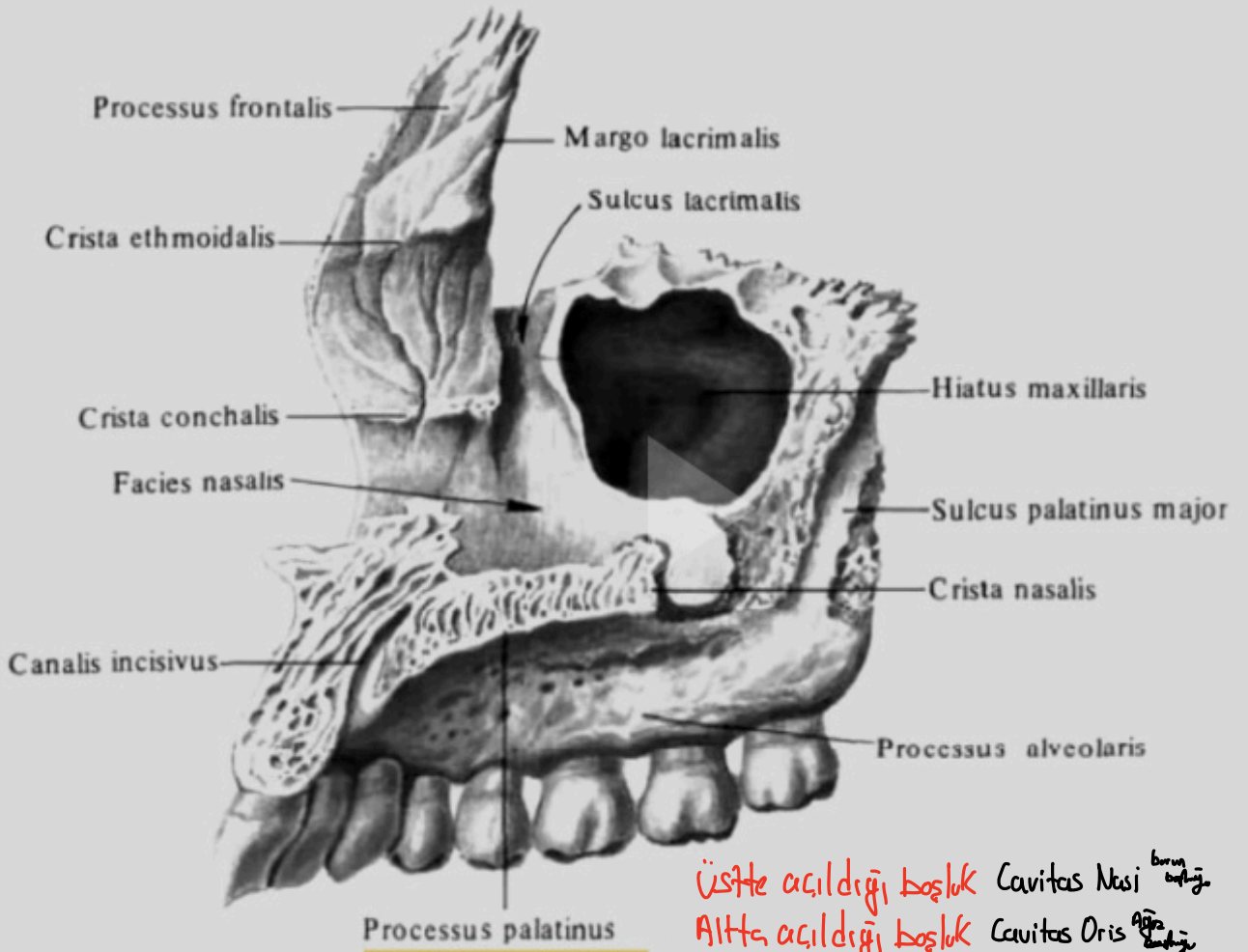
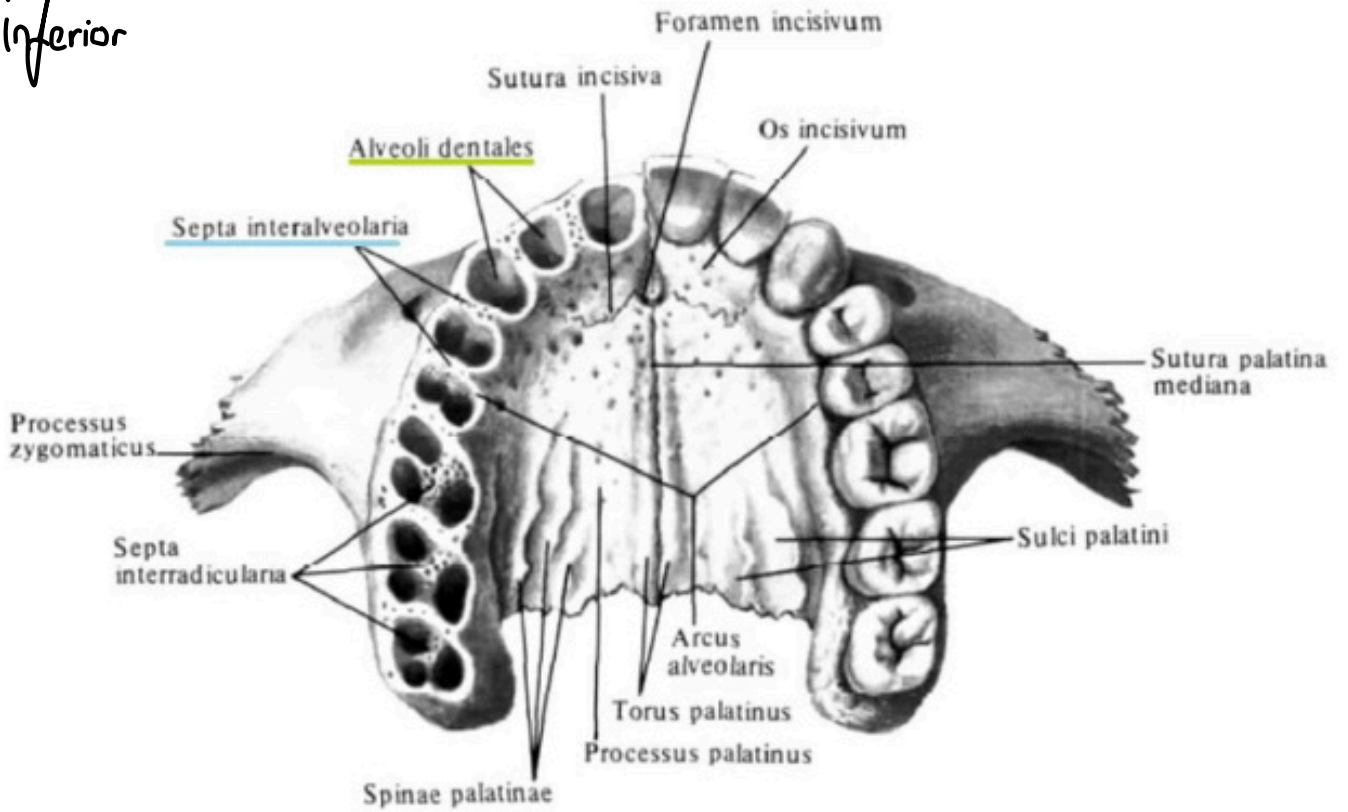


İçten



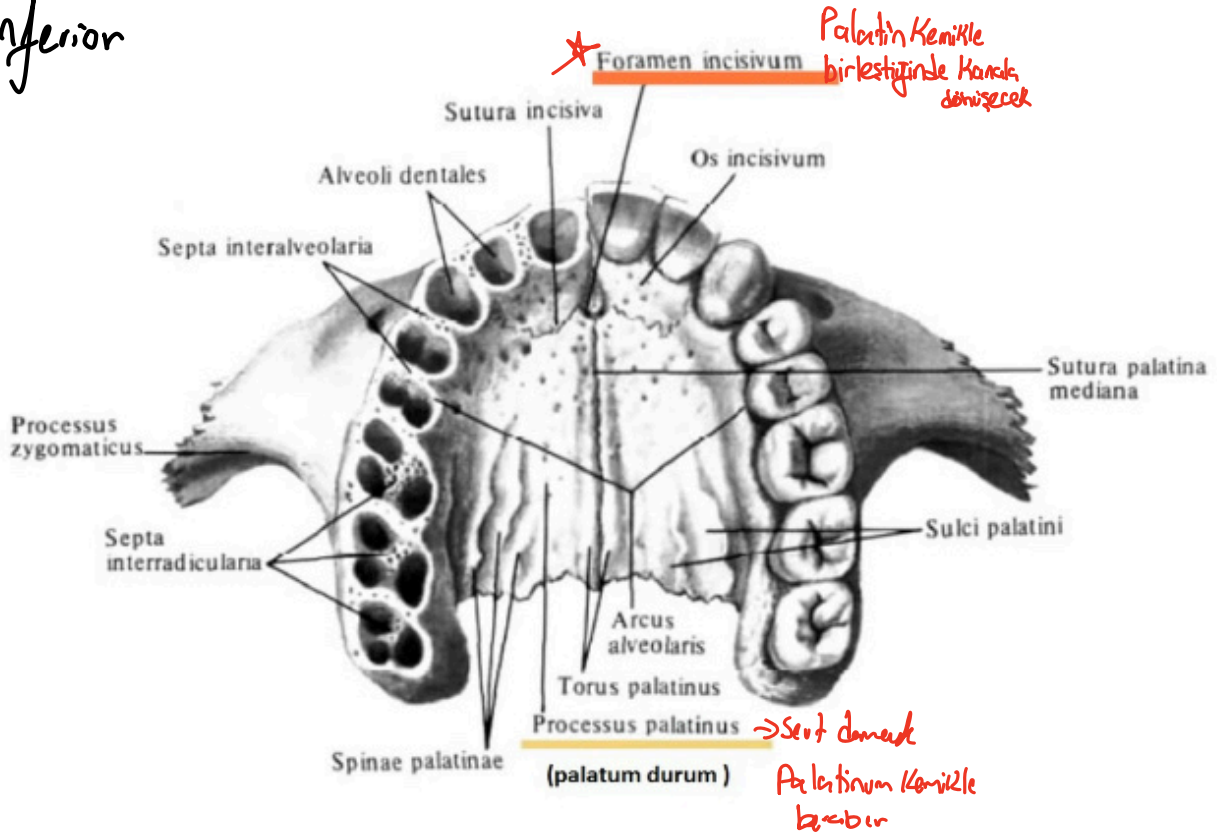


inferior

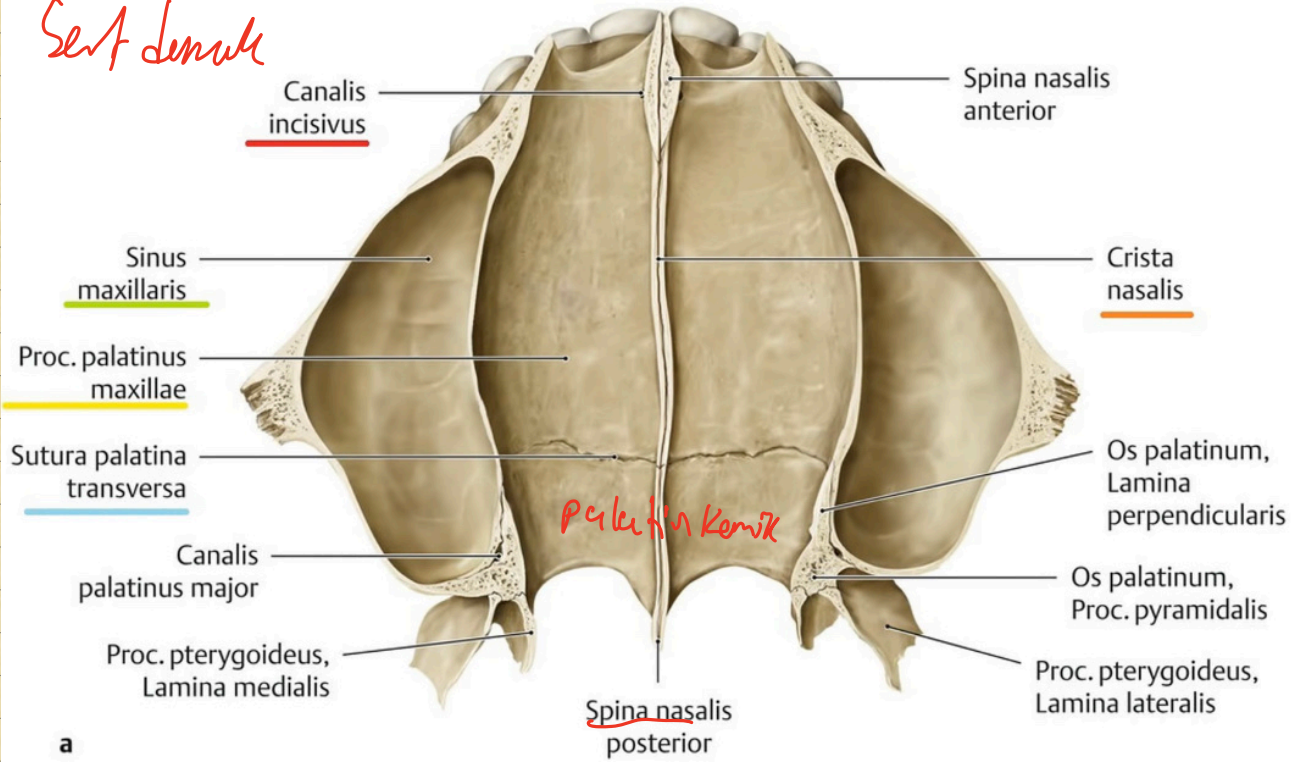


Üstte açıldığı boşluk Cavitas Nasi ^{burun boşluğu}
Altta açıldığı boşluk Cavitas Oris ^{Ağız boşluğu}

inferior



Sevte demekt



Palatin Kemikle